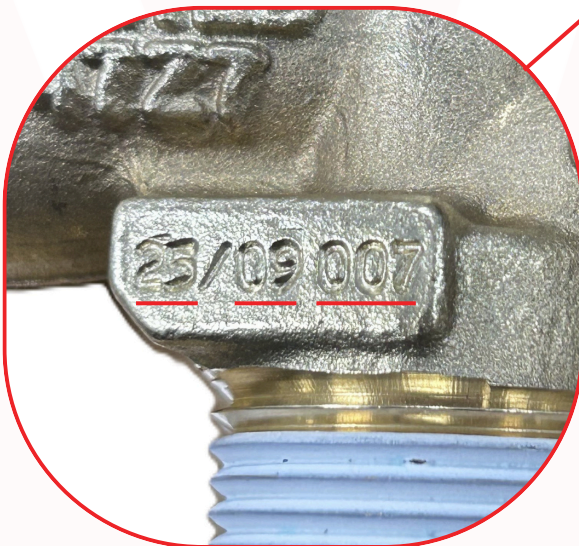
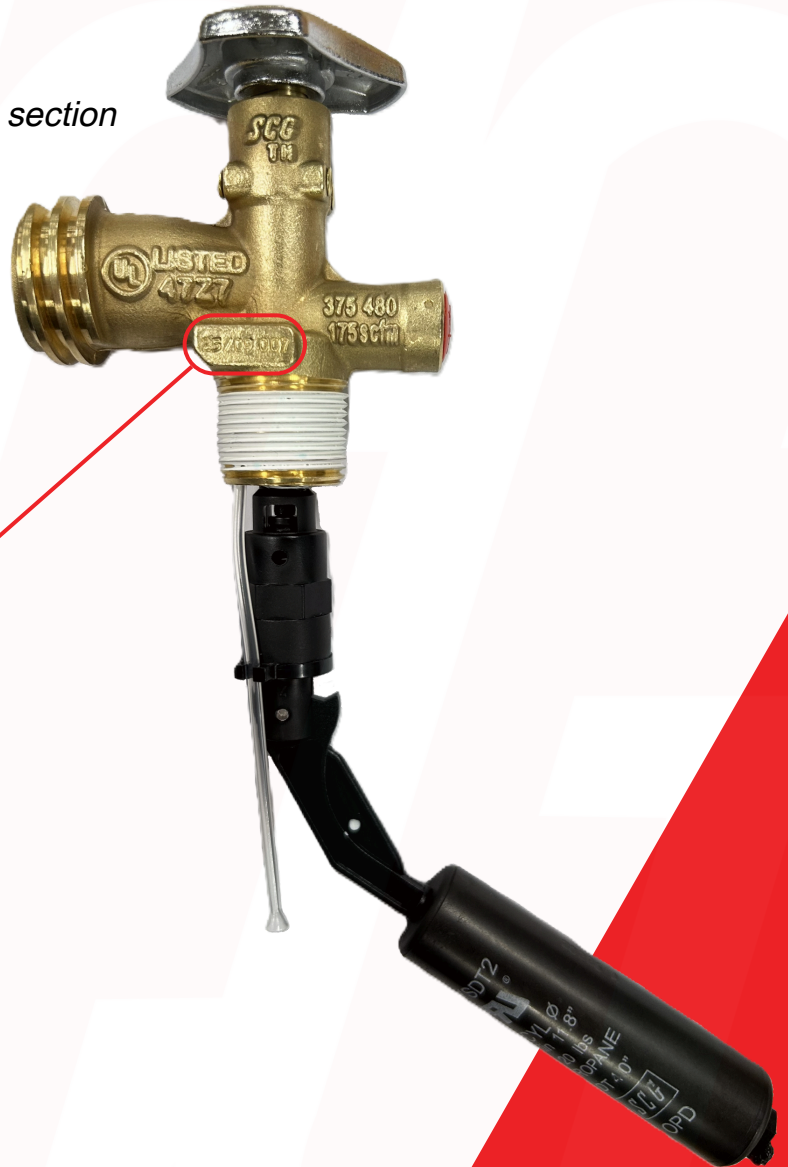


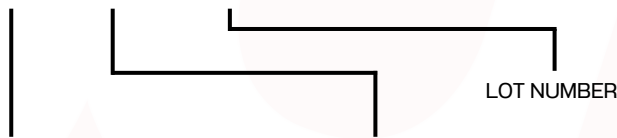
HOW TO IDENTIFY THE PRODUCTION DATE



The marking is located on the flat section of the SCG OPD valve body side.



YY/MM XXX



The first 2 digits identify the **year**
(for example, 25 = 2025)

The second 2 digits identify the **month**
(for example, 09 = September)

Note: For valves manufactured before 2023, the date code format is DDMMYYXX (e.g., 09112301).

**RESISTANCE
OVER THE LIMITS**